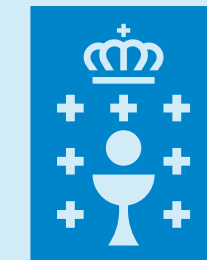




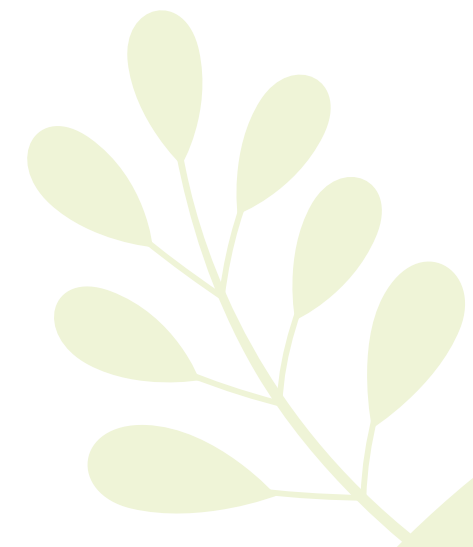
sogama

sogama



We work,
we educate,
we act for a
**sustainable
Galicia**





1 SOGAMA

We are a public company, 51% owned by the Galician Autonomous Government (Xunta de Galicia) and 49% by Naturgy. The company was founded in 1992 in response to the need for global, shared and committed action to protect the environment and deliver municipal waste management solutions.





2 The **SOGAMA** compromise

Our **mission**

Our key goal is to deliver optimum service for Galician citizens through the sustainable management of municipal resources.

Taking the European waste hierarchy based on the 3+1R principle (Reduce, Reuse, Recycle and Repurpose) as our benchmark, and with EU backing in the form of Cohesion Funds, our company is spearheading sustainable waste management, whilst also contributing to economic growth and social cohesion.



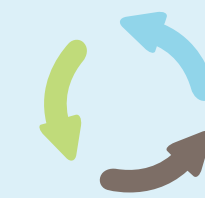
2 The **SOGAMA** compromise

Our model



Global

We cover the whole of Galicia.



Integral

We include the European waste hierarchy principles: Reduce, Reuse, Recycle and Repurpose.



Supportive

We deliver the same service and apply the same charges to all member local authorities.



Innovative

We incorporate state-of-the-art technologies to our industrial processes.



2 The **SOGAMA** compromise

Circular management

We deliver efficient waste management solutions for the Galician population, characterised by a capillary system that enables us to reach practically all Galicia's municipalities.

We seek to optimise the entire system through an extensive network of infrastructures that allows waste to be transferred and transported (by train or road) to the specific processing facilities. There, the organic matter is turned into compost, the recyclable materials are sorted and later sent to recycling centres and the non-recyclable fraction is used to generate electricity.



2 The **SOGAMA** compromise

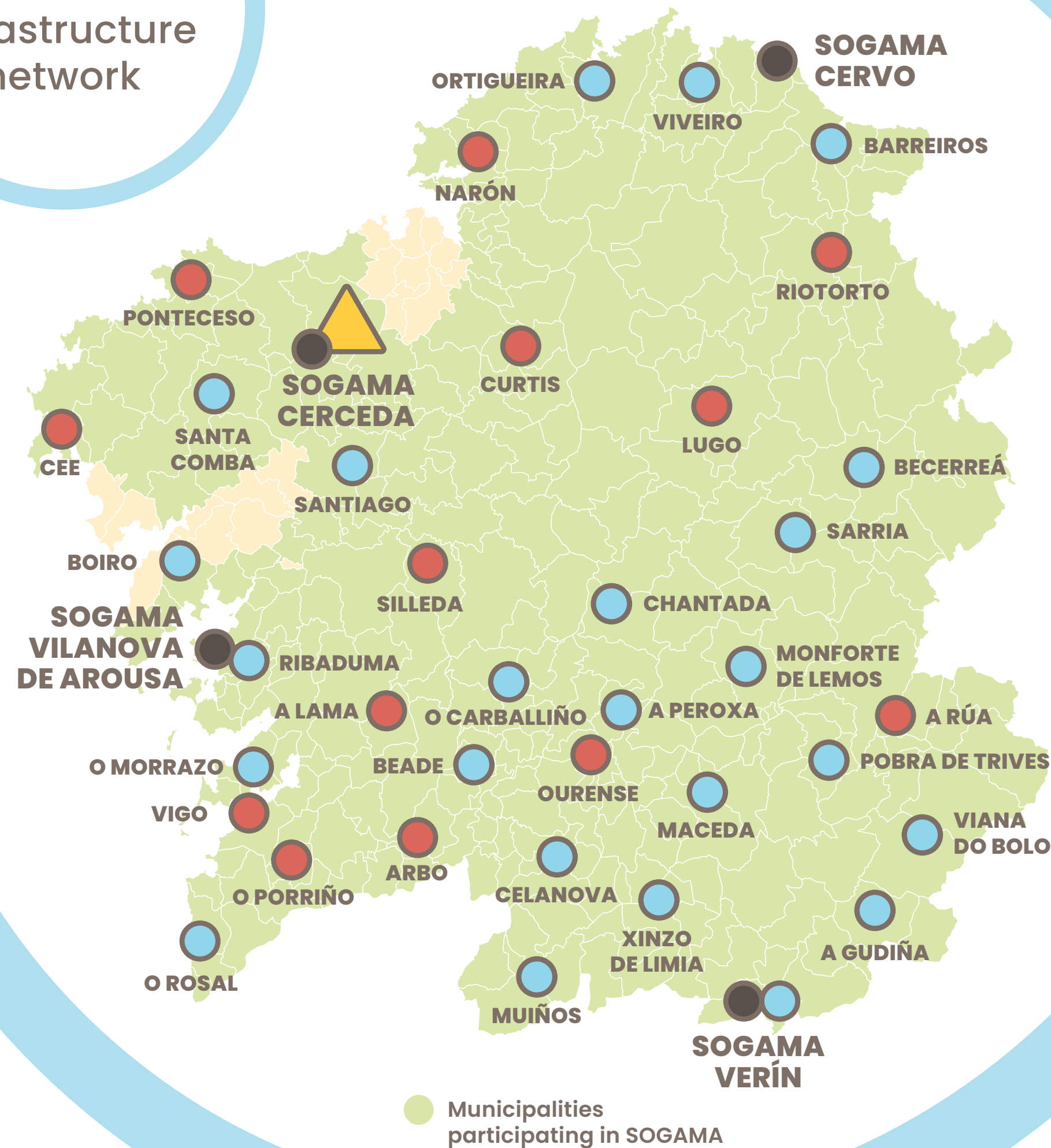
Environmental education

Our firm undertaking to society includes a commitment to environmental education, and in this sense, we assign major resources to raising citizens' awareness of best practices associated with the circular economy.

Our programme of visits to our industrial infrastructures, training sessions targeting various groups, leadership of environmental projects, collaboration agreements with other Spanish and international organisations, as well as our commitment to transparency and the dissemination of information, all form the bases of SOGAMA's work to raise citizen's social awareness.



SOGAMA
industrial
infrastructure
network



3

Cutting-edge infrastructures

The innovative Environmental Complex in Cerceda (A Coruña), which articulates all SOGAMA's activity, is the core of a capillary network that extends throughout the country, comprising transfer plants that receive the yellow, black and brown waste bags sorted by type.

The company, which executes the strategy of Galician Autonomous Government (Xunta de Galicia), also has a network of infrastructures for the recovery of organic matter collected in brown bins, thereby enabling it to be transformed into compost.

This network, made up of four bio-waste plants (one per province: Cervo in Lugo; Cerceda in A Coruña; Vilanova de Arousa, in Pontevedra; and Verín, in Ourense) and 13 transfer plants for the differentiated transfer of this waste fraction, means that practically all participating municipalities are located within 50 km of one of these facilities.



**SOGAMA
Environmental
Complex**



4 bio-waste
compost plants



13 bio-waste transfer plants



24 transfer
plants

4

Circularity in the SOGAMA model

Our activity is centred on the fractions deposited in yellow bins (plastic packaging, cans and cartons), brown bins (organic material) and conventional bins (other waste).

Items placed in blue bins (paper and cardboard), green igloo bins (glass) and other waste products such as batteries, electrical appliances and oils, etc., are handled directly by authorised management companies in accordance with their type.

On arrival at the processing facilities, each fraction undergoes differentiated procedures, in order to ensure that all the waste products handled are transformed into resources, thereby completing the sustainability circle.



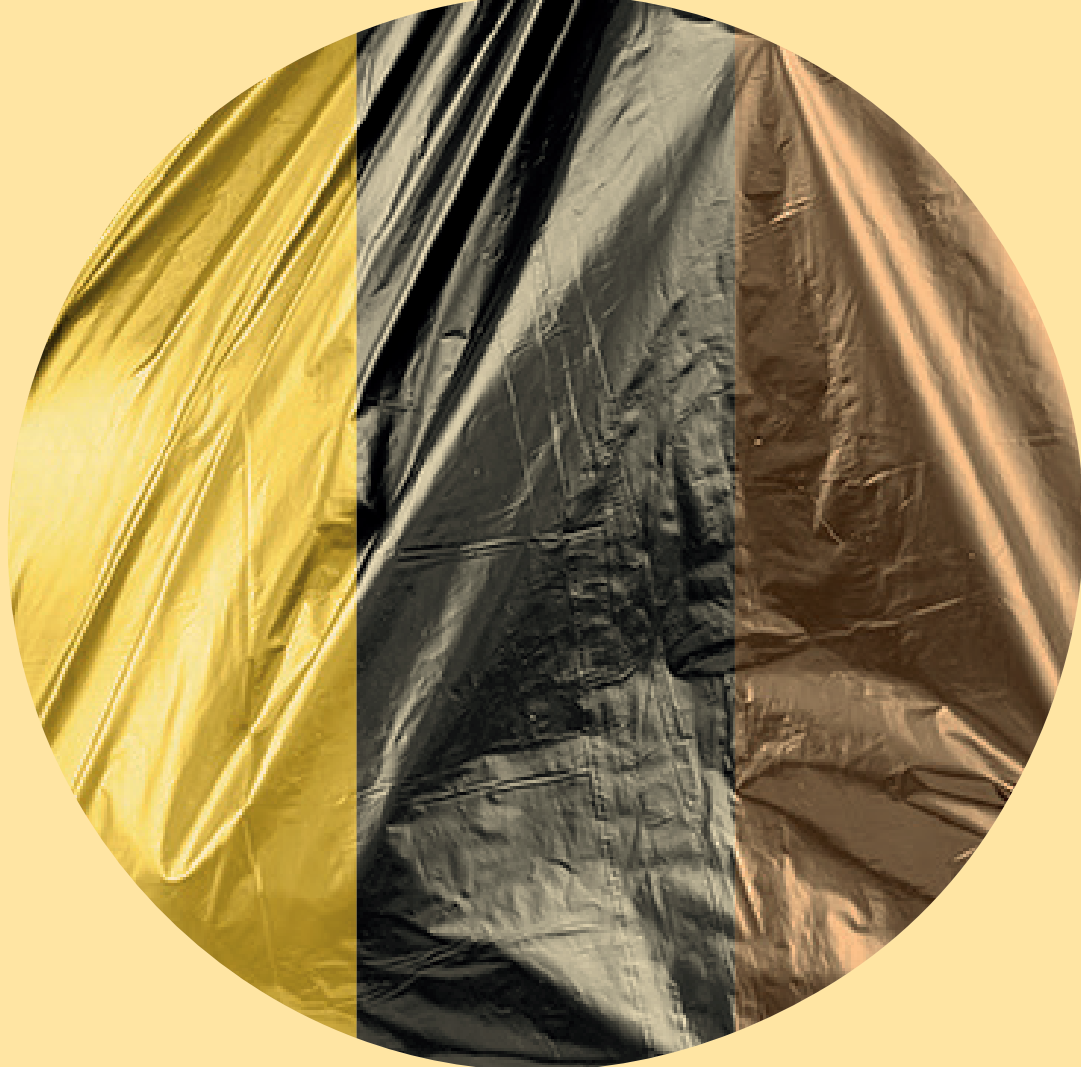
Yellow bags



Black bags



Brown bags



Yellow bags

Waste contained in yellow bags is processed in the Light Packaging Sorting Plant, where the items are separated by type. Identification is via cutting-edge laser systems, aspiration processes in the case of light plastics and a range of magnets for metals. Following sorting and classification, the waste products are sent to recycling centres where new products are manufactured, giving them a new life and enabling them to be reincorporated onto the commercial circuit.

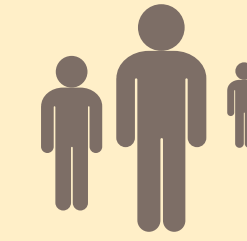
Black bags

The waste contained in black bags is also sorted in a plant that uses 4.0-industry technology. Recyclable items are sent to transformation plants, whilst non-recyclable items are transformed into RDF (Refuse Derived Fuel) for valorisation in thermal power stations in the form of electricity.

Brown bags

Organic waste from brown bags, collected separately in bins of the same colour, is processed at four bio-waste plants for its later transformation into compost, which is used as a natural fertiliser in agriculture and gardening.





2.242.000

Serving more than
2 million people



295

SOGAMA delivers its
services to 94% of
Galicia's local
authorities



1.000.000

Capacity to handle 1 million
tons of municipal solid
waste each year



57%

Of waste
transported
by train



1.000

Direct and
indirect jobs



12%

The energy generated
by SOGAMA accounts for
12% of the total amount
consumed by Galician
households



Morzós, 10 • As Encrobas • 15187 – Cerceda (A Coruña)
www.sogama.gal